

Bottom of the pile!

Here are the results from children guessing which English Premiership club would finish the season at the bottom of the league. (A larger version of the graph is overleaf)

This has been collected each week and the percentage of students who thought these four teams, represented by the four lines, would be bottom of the league by the end of the season is recorded. You will need to think carefully about what it means when the lines go up and down in terms of whether that team is getting good or bad results.

Data taken from CensusAtSchool Phase 5 2004/5

Look very carefully at the graph and try to suggest from the predictions:

- At the start of the season which club did most students think would come bottom?
- Which club was likely to have been bottom at Christmas?
- What evidence does the graph show to support your last answer?
- Which club had a few good results in March & April?
- Which club do you think lost 4-1 at the start of April then beat three teams from much higher league positions during the rest of April?
- The four clubs are Crystal Palace, Norwich, Southampton and West Brom. Can you guess which clubs are A, B, C & D?

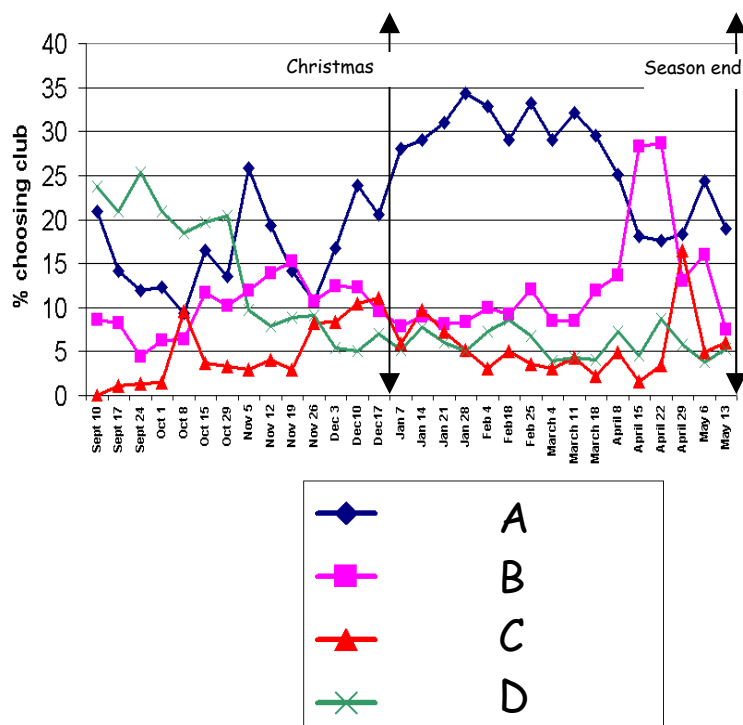
The FA Premier League.



Created in 1992 the Premiership comprises the top 20 football clubs in England. It boasts some of the best players in the world, had club revenue of over £1.3billion in 2003/4 and is ranked second in UEFA rankings of European leagues. At the end of each season the three lowest placed teams are relegated. The relegation battle in 2004/5 was one of the most dramatic ever with four clubs fighting it out on the final day of the season on May15th. Over the history of the Premier league the so-called 'Curse of Christmas' became apparent. For the first 12 years of its existence the team who was bottom at Christmas was always relegated. The 2004/5 season was the first time this did not happen!

Who will come bottom of the Premiership?

Data accumulated weekly from Phase 5 CensusAtSchool 2004/5



Who will come bottom of the Premiership?

Data accumulated weekly from Phase 5 CensusAtSchool 2004/5

