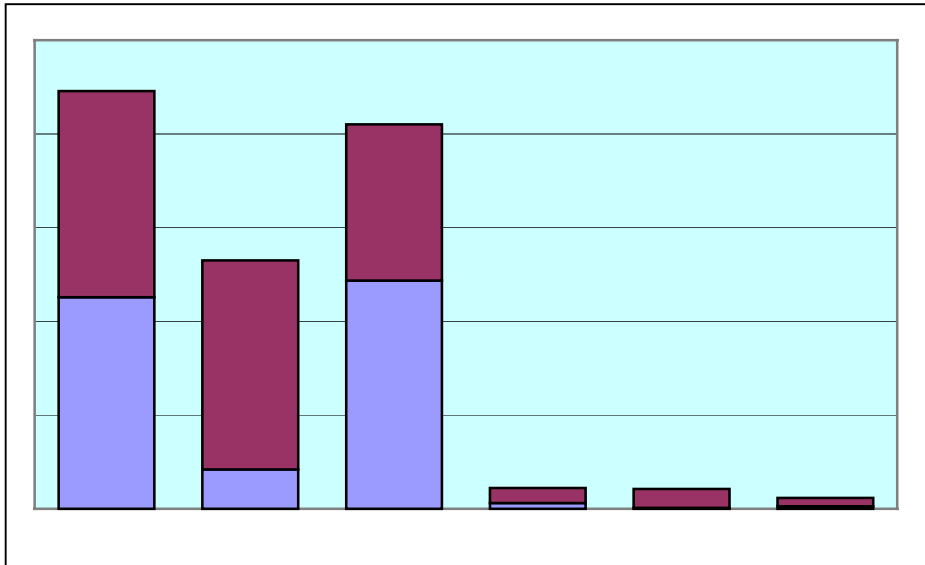


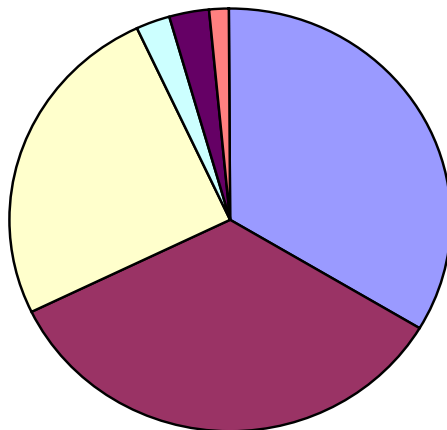
What information does this Graph give you?



Absolutely nothing is the answer. Just having a title would be an improvement.

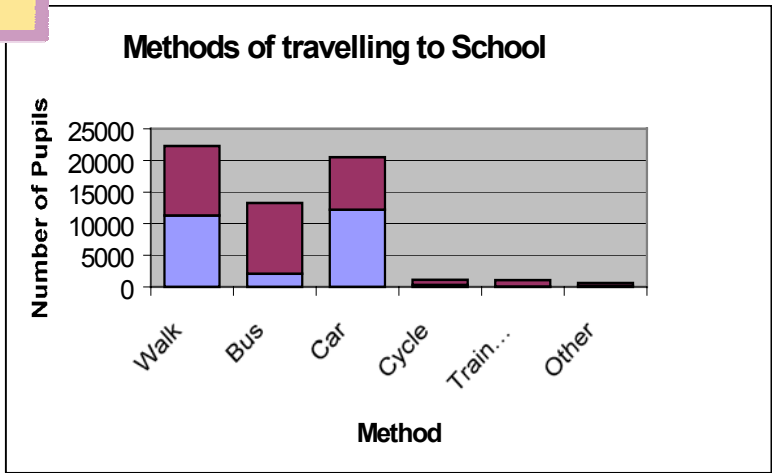
So how about this one?

How 11-16 yr olds Travel to School



At least we know what the chart is meant to be about, but what do the individual slices mean?

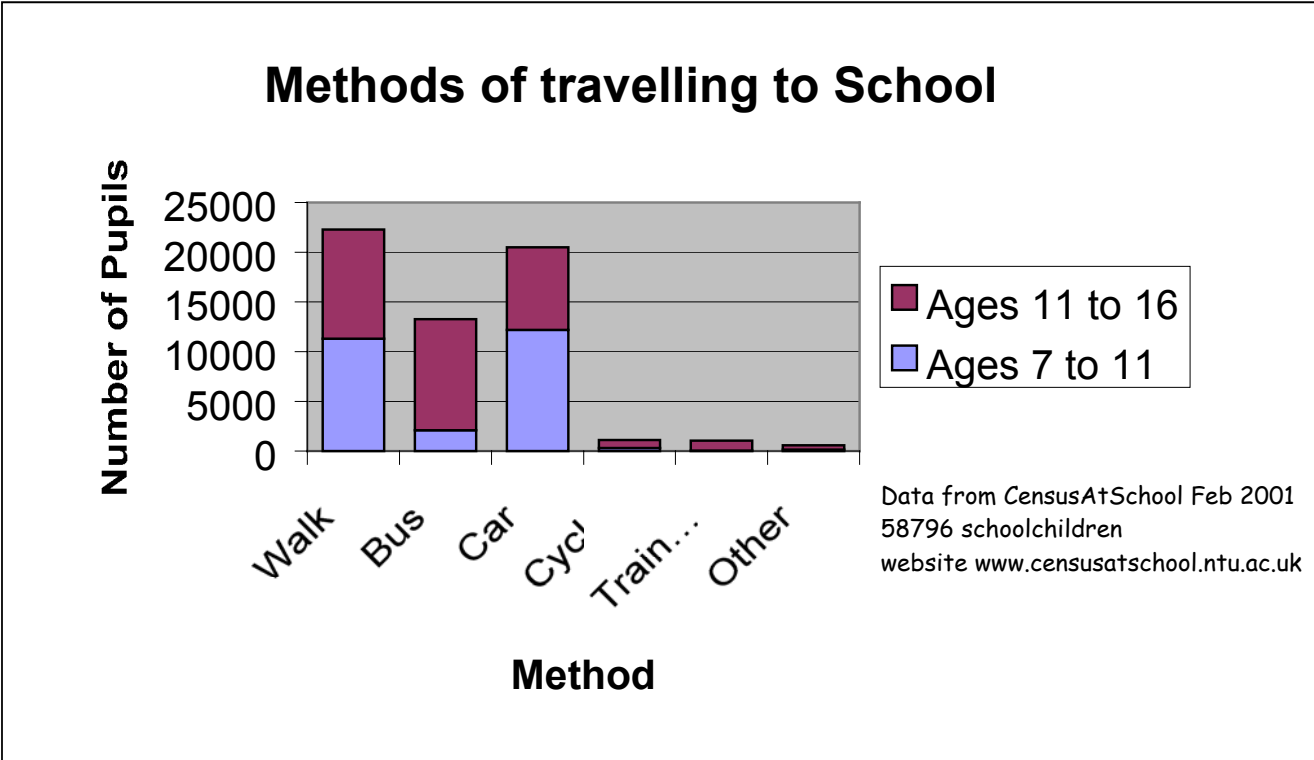
What we need are **clear labels** to help us. Lets try again:



This looks much better but there are still a couple of things missing.
Can you spot them?

That's right - we need to know what the two colours in each bar mean and also where the data came from.

Lets have a final go:



At last, a barchart that gives us some useful information.
Always remember:

TITLE LABELS KEY

Now draw a **useful** bar chart of either the data given below or some data you have collected yourself.

Travel Method	Walk	Bus	Car	Cycle	Train..	Other
Number of People	16	8	12	4	0	1