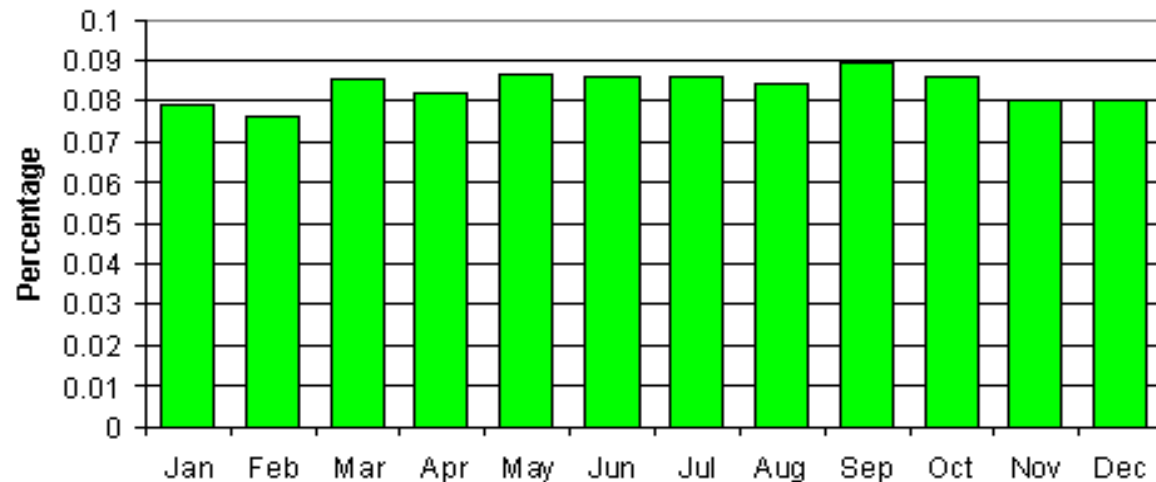


### Birth Months of CensusAtSchool Pupils



A bar chart showing which month 59,000 children aged 7 to 16 have their birthday in.  
Data taken from Phase 1 of the CensusAtSchool project, Autumn 2000.

**Why are the bars not all exactly the same height?**

**What would a similar bar chart for your class look like? Why would it not look like this one?**

**If the graph were for Birth Months of Polar Bears instead of people, how would it change?**